



PBS Endo Enterprise



Referral Reports

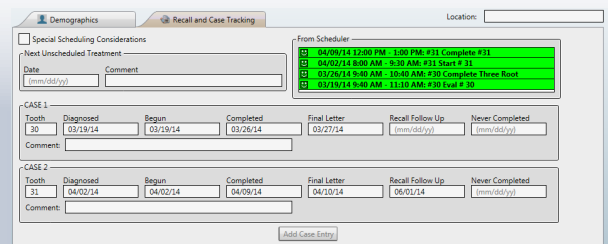
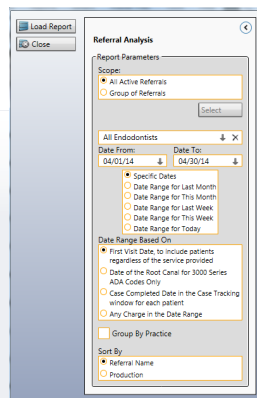
PBS Endo *Marketing* is a suite of features to promote your practice to referrals and patients.

The Marketing Suite in PBS Endo

- Letters
- **REFERRAL REPORTS**
- Practice Promotion & Patient Registry

Referral Reports give you the analysis you need to evaluate the kinds of cases sent by your referrals.

- Detailed reports to review Revenue and Collections
- Automatically linked to Unlimited Case Tracking
- View all patients for a referral and select
- Case Tracking to evaluate the kinds of cases



#1 Next Generation Practice Management Software
Trusted by More Endodontists Since 1986

pbsendo.com

800-535-0198